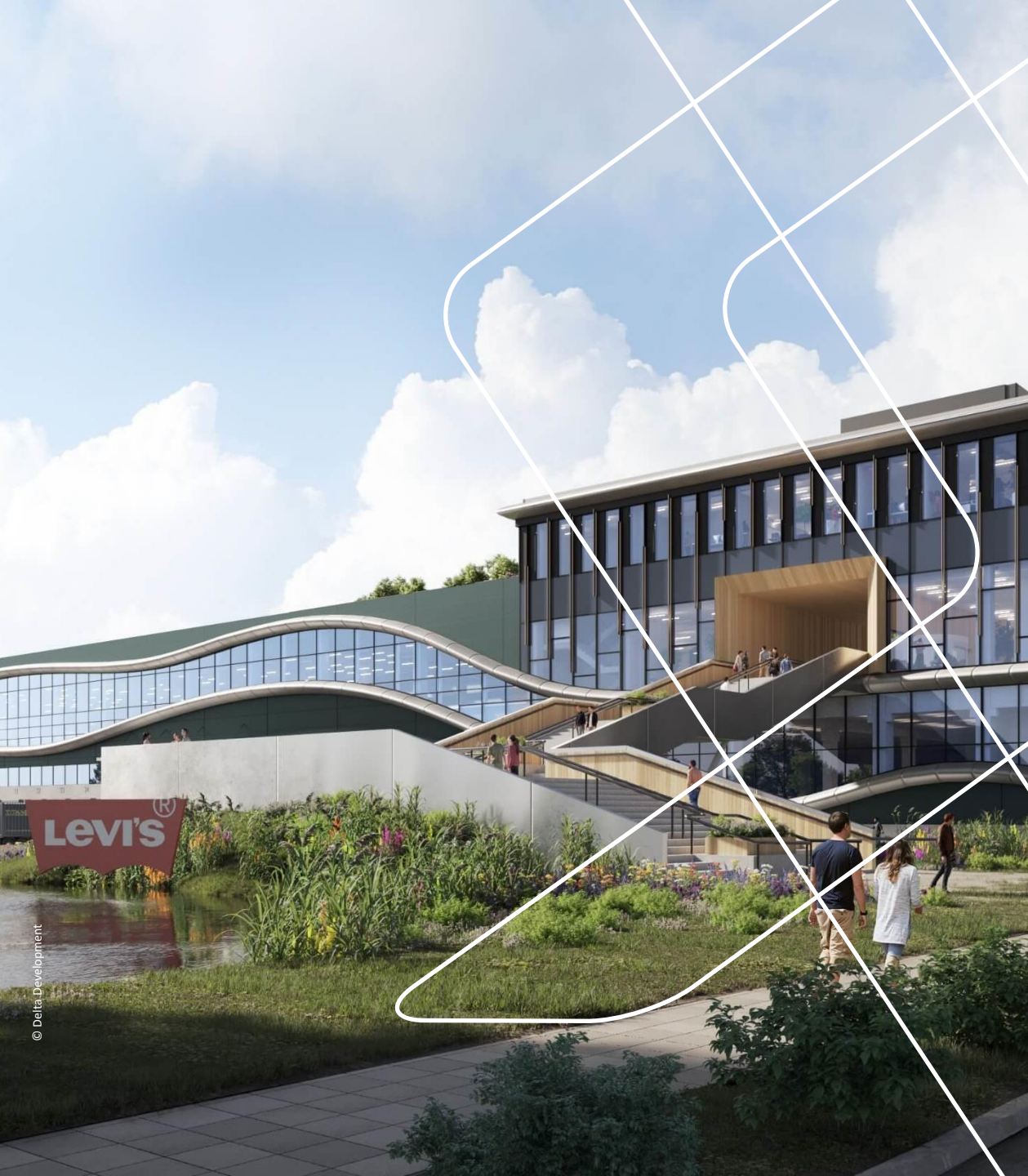


DREES &  
SOMMER

# TURNING A USUAL WAREHOUSE INTO A WELL- AWARE-HOUSE

LISA-MARIE LAUB,  
DREES & SOMMER SE





## KEY FACTS

DISTRIBUTION CENTER & OFFICE

CENTRAL EUROPEAN LOCATION

SUSTAINABILITY TARGETS

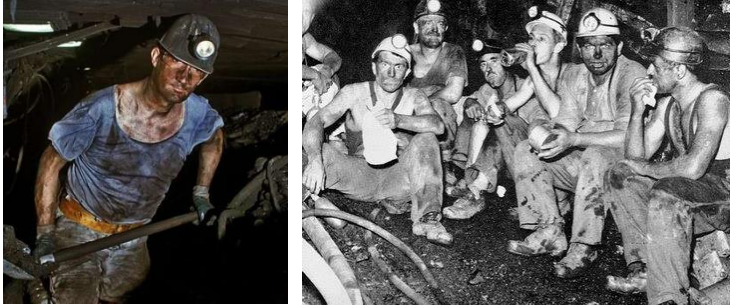
SITE AREA: 100.000 M<sup>2</sup>

GFA: 75.000 M<sup>2</sup>

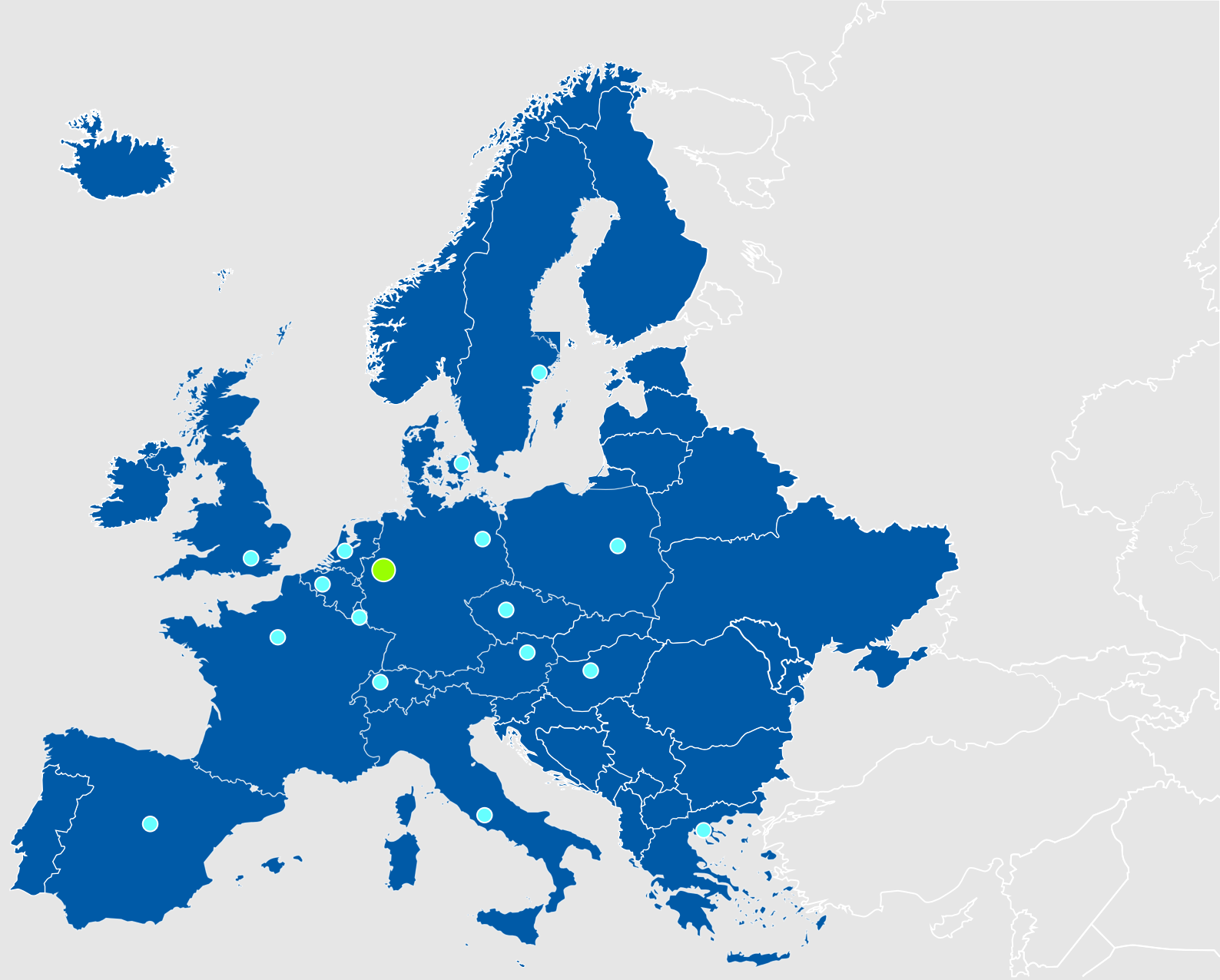
650 JOBS



# FINDING THE RIGHT LOCATION



Quelle: Geschichte des Bergbaus in Dorsten



# BRING THE LOCATION SPECIFICS TO THE DESIGN CONCEPT



**1853**  
Levi Strauss, a Bavarian immigrant, arrives in San Francisco, California, and opens a dry goods business.



**1850**  
Zeche Fürst Leopold and Zeche Julius-Philipp merge to form a single mining company, known as Zeche Fürst Leopold-Julius-Philipp. This consolidation strengthens the coal mining industry in Dorsten.



**1908**  
1936: The first Levi's® jeans for women, known as Lady Levi's®, are introduced.



FROM THIS



Quelle: BREWER

**DREES &  
SOMMER**

TO THAT



© Delta Development

**DREES &  
SOMMER**

# RENEWABLE ENERGIES

GEOTHERMAL  
ENERGY

HEAT  
PUMPS

PHOTO-  
VOLTAICS

USING  
RAINWATER

# BIODIVERSITY

GREEN  
SPACES

FRUIT  
TREES

HERBAL  
GARDEN

POND



© Delta Development



# WORKSPACES

## FULLY AUTOMATED WAREHOUSE

25.000 m<sup>2</sup>  
5 employees

GOODS  
TO PERSON  
40.000 m<sup>2</sup>  
300 employees per shift

OFFICE +  
CANTEEN  
10.000 m<sup>2</sup>  
60 empl.

# THE USUAL

# VISUAL COMFORT

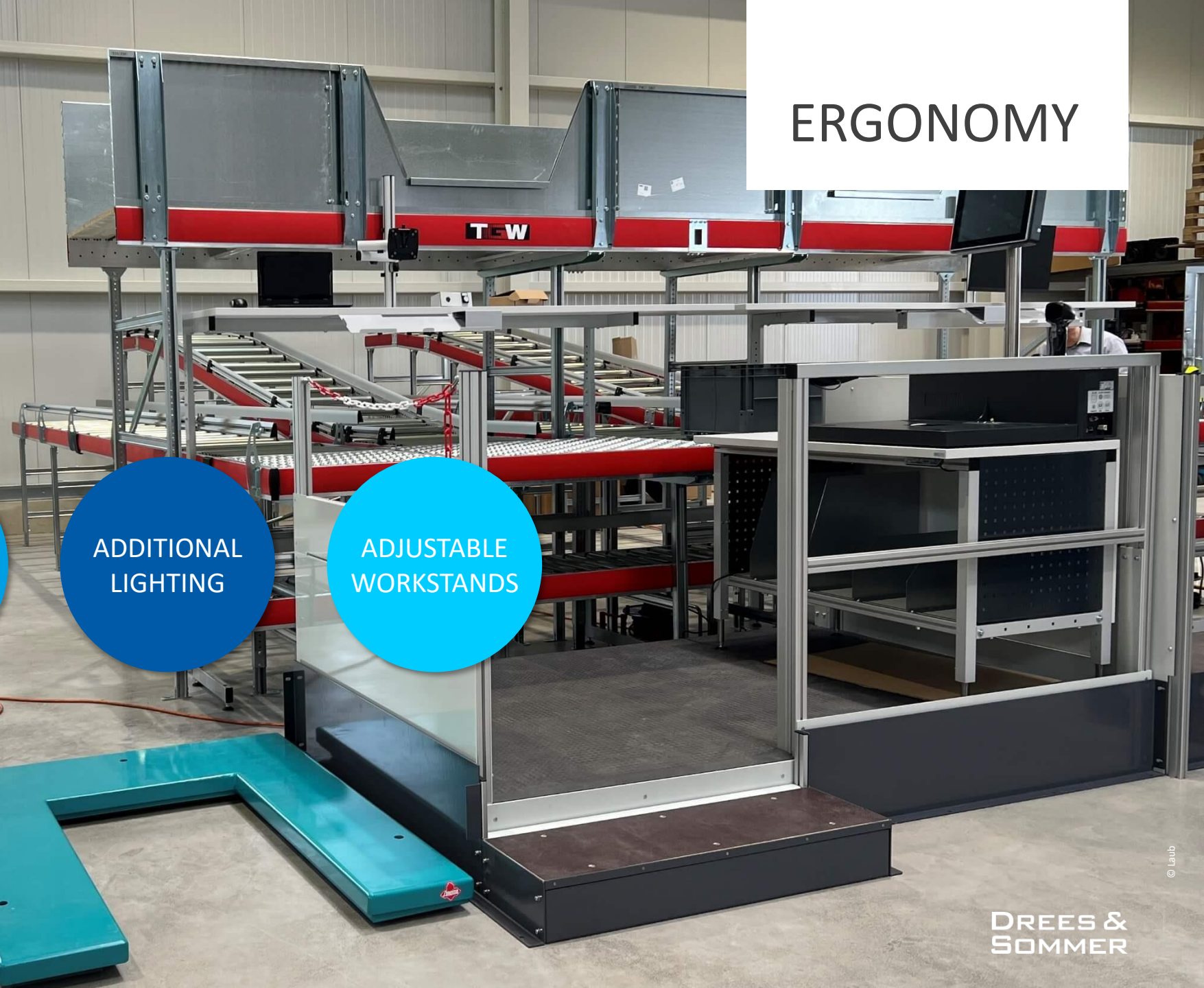




# DAYLIGHT SPECIFIC DESIGN



# ERGONOMY



SPECIAL  
EQUIPMENT

COMFORT  
FLOORING

ADDITIONAL  
LIGHTING

ADJUSTABLE  
WORKSTANDS



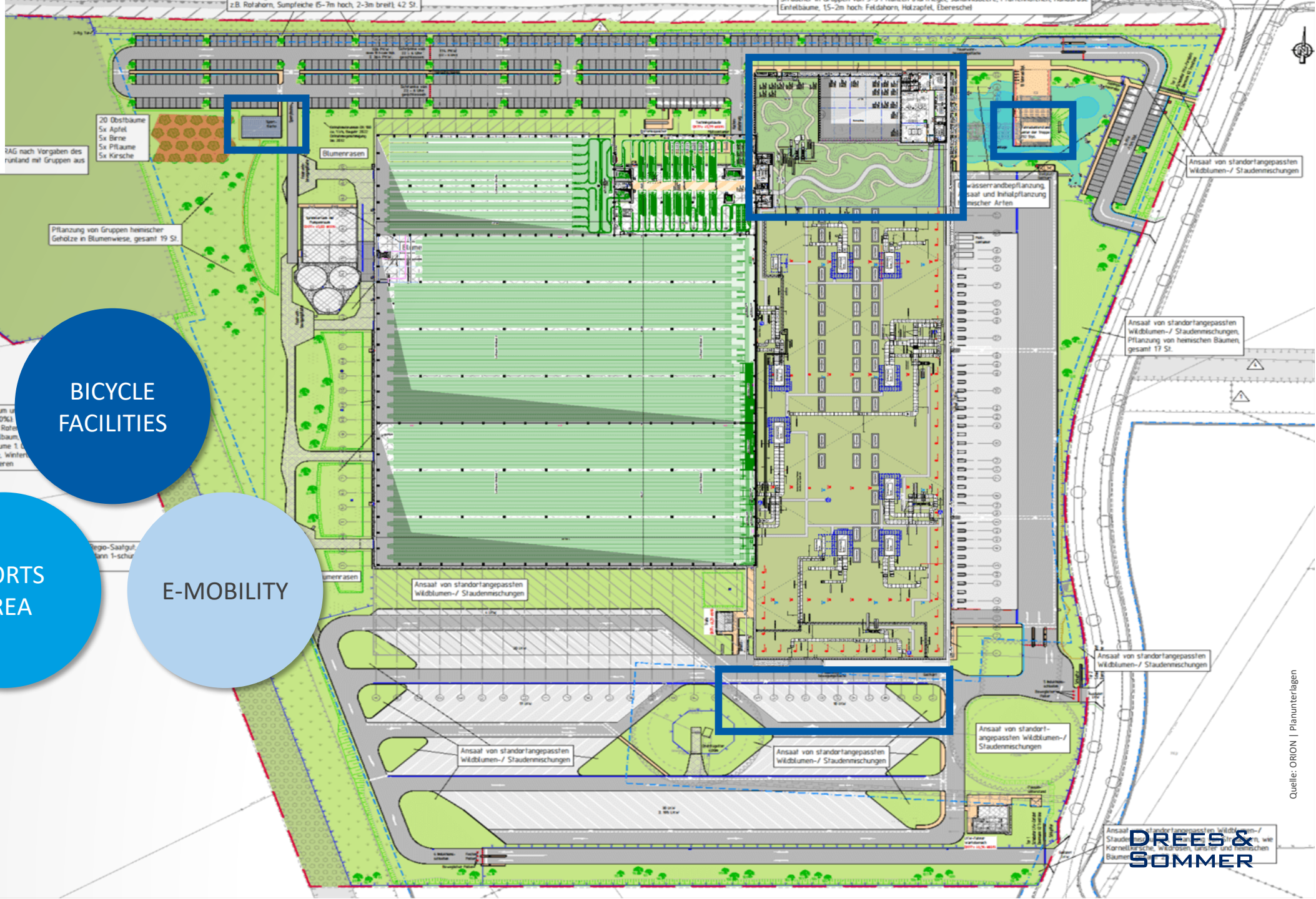
# MOVE

WALKING  
PATH

BICYCLE  
FACILITIES

SPORTS  
AREA

E-MOBILITY



# NOURISHMENT

FOOD  
STATIONS

WATER  
DISPENSERS

FRUIT  
BASKET

HEALTHY  
FOOD

# CANTEEN

COME  
TOGETHER

REUSED  
LIGHTS

REUSED  
PALLET

VIEW



# SMART TECHNOLOGIES





**UNITING  
OPPOSITES  
TO CREATE  
A WORLD  
WE WANT  
TO LIVE IN**

**DREES &  
SOMMER**